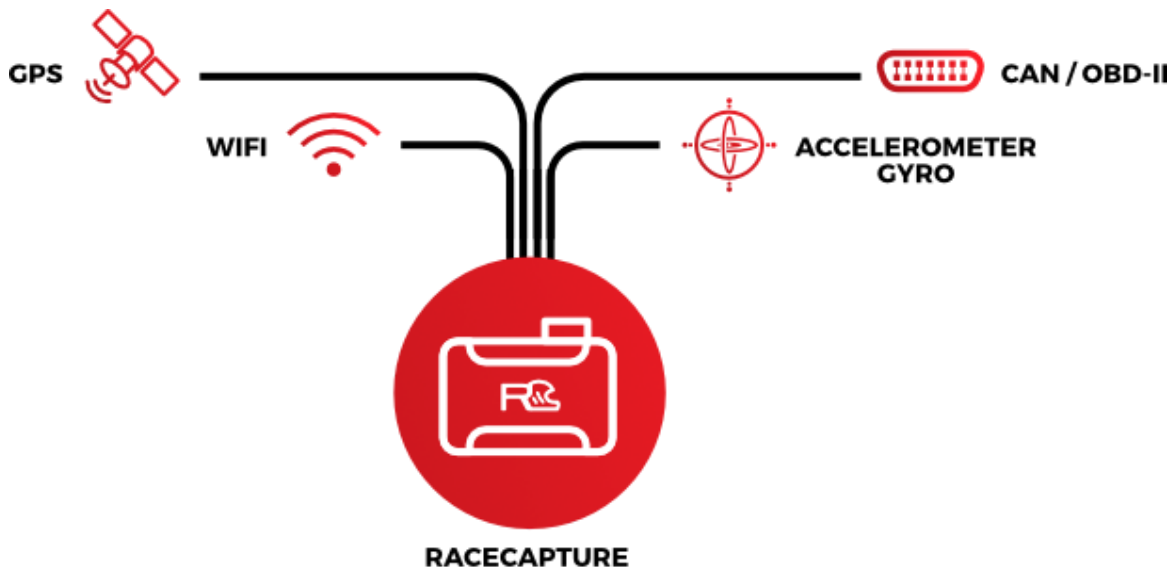


RC RaceCapture/Track

THE high performance secret: Data

The secret of the great racing legends and the new rookie stars is performance data. They know and have access to all of the info from their track sessions. So how will you learn where to go faster when your only data point is just a lap time? RaceCapture is here to bring you powerful motorsports performance data in one compact plug-and-play device. Just plug it into your OBDII port, launch the included RaceCapture app on Android or iOS, and hit the track. You'll get predictive lap times with the high performance GPS, stream real-time engine sensor data, and measure cornering and braking forces using the dedicated precision 6 axis accelerometer+gyro.



Make your smart phone smarter



RaceCapture connects to your Android or iOS device over its built-in WiFi transforming your smart device into a customizable racing dashboard. While on track, you can view predictive lap times or check the gauges important to you. Once off-track, you can analyze your laps and compare different data points in the RaceCapture app. With RaceCapture, you'll never flip through a thick how-to manual again, it's easy to get started with the automated setup guiding you.

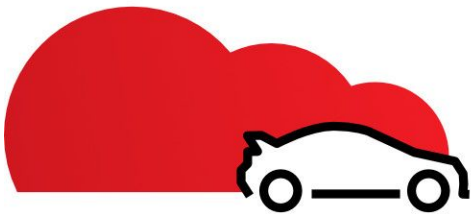


Stand on the Podium

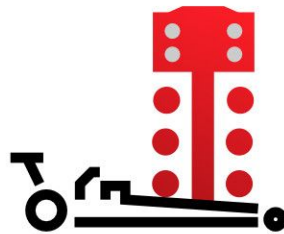


Racing is pretty great, but it's even greater when you get to share about it! With RaceCapture, you can live-stream your racing to Podium, for sharing and comparing laps and runs with your friends, get feedback from race coaches, and claim the top lap time at the local track. It's free and built into the RaceCapture app! Check it out and learn more at <https://podium.live>

Your type of racing, your way



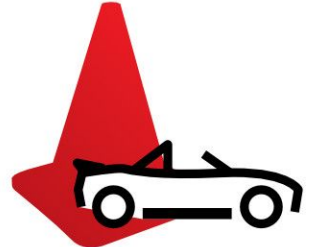
DRIFTING



DRAG RACING



ROAD RACING

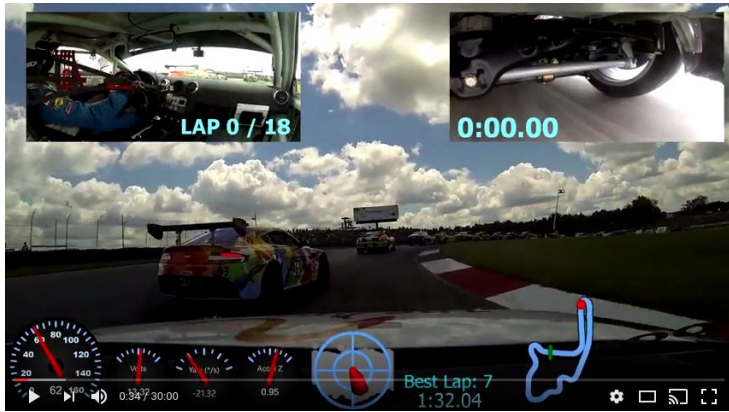


AUTOCROSS

Racing comes in many flavors and you want something that works with what you're passionate about! Whether you race on ovals or circuits, autocross or hill climb, drift or rally, you're covered with 100's of track maps world-wide. Need to attack a track not listed in the app? You can easily create your own track using our interactive track builder to map any race track or custom course!



Control your camera

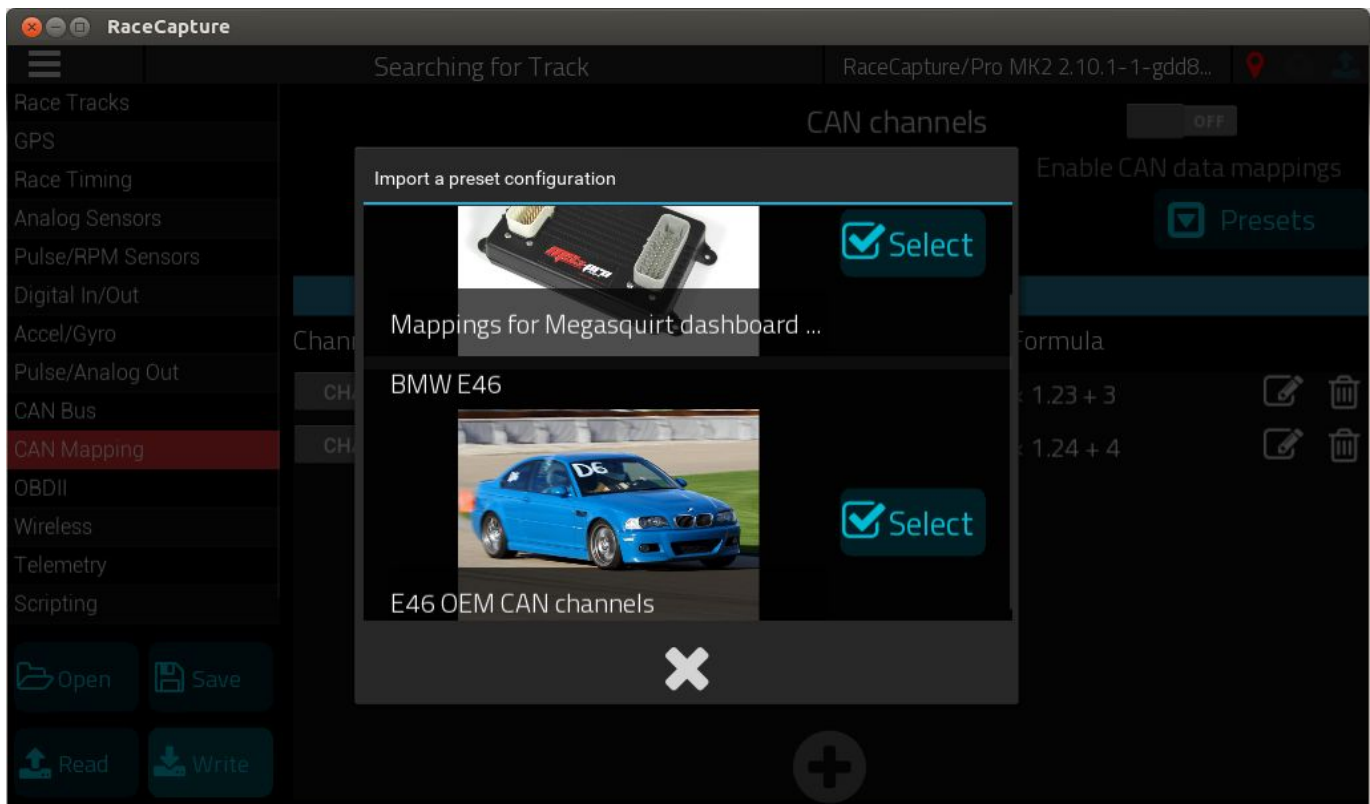


When you rule, you want the video to prove it. With RaceCapture you can automatically control WiFi-enabled, GoPro™ cameras for precise video and data synchronization - making it easy to sync and import data into popular rendering packages such as RaceRender and DashWare.

Coming in firmware 2.11.0

Powerful ECU integration

In addition to CAN OBDII support, RaceCapture also supports mapping of channels from CAN data streams, allowing direct integration with CAN enabled ECU such as Motec, Link, AEM, Megasquirt - including direct integration to OEM-specific CAN networks, such as found on the BMW E46. And, for maximum flexibility you'll also be able to capture data from 1996-2007 legacy OBDII interfaces using the OBD2CAN option.



Power to the people



Compact, powerful, and value-priced, RaceCapture makes it easier than ever to get high-quality high-performance data from your racing and helps you discover where you were awesome, in real-time, and where you can be awesome every time. With so many of the smarts of RaceCapture located in the app, RaceCapture's value will continue to grow as exciting new features,

functionality, and connectivity to Podium are added.

RaceCapture is available now on <http://autosportlabs.com> and from our dealers worldwide.

For more information and dealer inquiry visit autosportlabs.com

Orderable SKUs

RaceCapture (CAN OBDII only)	RCT_CAN
Racecapture (inc. 1996-2007 Legacy OBDII support)	RCT_OBD2CAN

RaceCapture Specifications

Specifications are subject to change

Sensors	
CAN bus	CAN 2.0 compatible, 1M baud
GPS	1 / 5 / 10 / 25 / 50Hz
Accelerometer + Gyro	3 channel (8G) / 3 channel gyro (300 degrees/sec)
Protocols	
OBDII	CAN OBDII native support; legacy 1996-2007 support with optional OBD2CAN module
CAN bus direct mapping	Ability to directly map streaming CAN data

Capabilities	
Predictive lap timing	Built-in
Track mapping	Circuit and point-point
Track maps	Unlimited + interactive track builder
Analysis	Included in the RaceCapture App
Real-time telemetry	Live-streaming to Podium http://podium.live via the included RaceCapture app
Export data format	Plain CSV / RaceRender compatible
Physical	
Dimensions	79 x 53 x 25 mm (3.1 x 2.9 x .98 in.)
Weight	142g (5 oz)



sales@autosportlabs.com

Copyright 2016 Autosport Labs Inc.

RaceCapture, Autosport Labs, and Podium are registered trademarks of Autosport Labs Inc. All rights reserved.